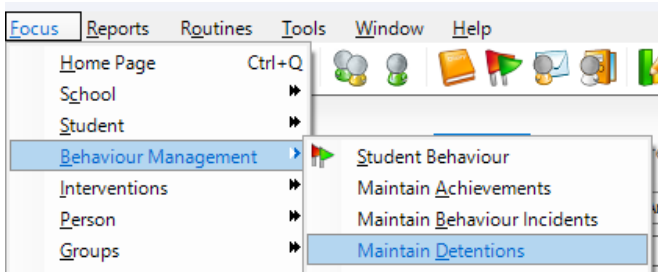
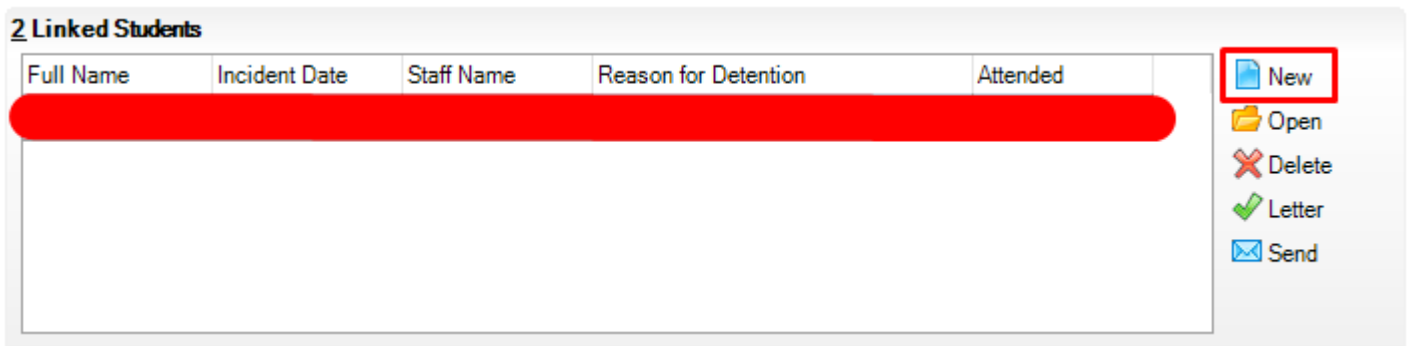


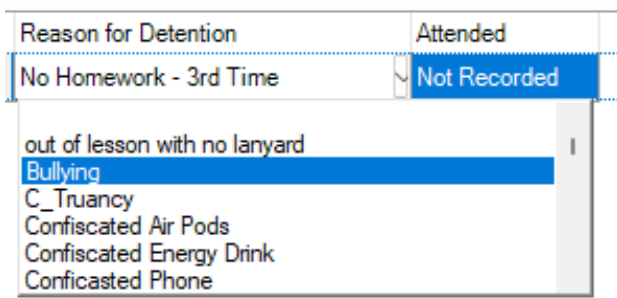
Adding Students to detentions on Sims



At the top of Sims, select Focus > Behaviour Management > Maintain Detentions and search for then select the detention you would like to add a student to.



Once the detention has been selected, go to the Linked students panel and click “New” to bring up a panel for selecting students. Search for the student and select them here. Once selected, they will be added to the detention.



Once the student has been added, it will automatically sync their reason for detention as the behaviour incident. This can be changed by clicking on the dropdown if required.

If you are setting a detention at the same time as a Behaviour Incident being recorded, please ensure you are searching for a detention and not adding a new detention.